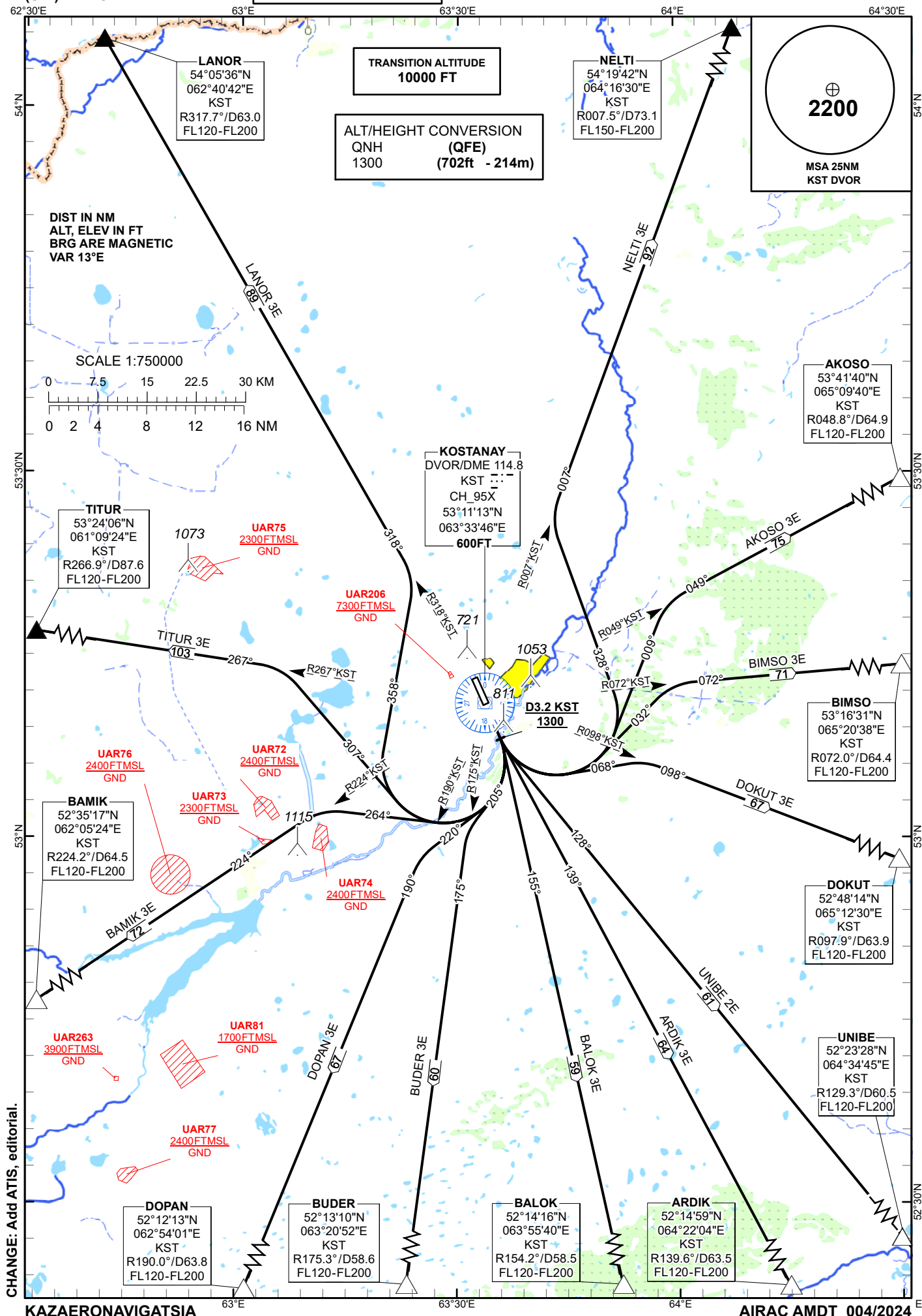


STANDARD DEPARTURE  
CHART - INSTRUMENT  
(SID) - ICAO

KOSTANAY TOWER 129.30  
KOSTANAY ATIS (EN) 118.5  
KOSTANAY ATIS (RU) 126.8

NELTI 3E, AKOSO 3E, BIMSO 3E, DOKUT 3E,  
ARDIK 3E, BALOK 3E, BUDER 3E, DOPAN 3E,  
BAMIK 3E, TITUR 3E, LANOR 3E, UNIBE 2E.

KOSTANAY  
RWY 14



<b>Standard Departure Routes - Instrument (SID) Kostanay RWY 14</b>
<b>NELTI 3E</b> After take-off climb straight ahead to 1300FT or above. At 3.2NM KST, turn LEFT on track 328° until intercept R007°KST, then proceed on track 007° to NELTI (R007.5° D73.1NM KST). Cross NELTI at FL150 – FL200.
<b>AKOSO 3E</b> After take-off climb straight ahead to 1300FT or above. At 3.2NM KST, turn LEFT on track 009° until intercept R049°KST, then proceed on track 049° to AKOSO (R048.8° D64.9NM KST). Cross AKOSO at FL120 – FL200.
<b>BIMSO 3E</b> After take-off climb straight ahead to 1300FT or above. At 3.2NM KST, turn LEFT on track 032° until intercept R072°KST, then proceed on track 072° to BIMSO (R072.0° D64.4NM KST). Cross BIMSO at FL120 – FL200.
<b>DOKUT 3E</b> After take-off climb straight ahead to 1300FT or above. At 3.2NM KST, turn LEFT on track 068° until intercept R098°KST, then proceed on track 098° to DOKUT (R097.9° D63.9NM KST). Cross DOKUT at FL120 – FL200.
<b>ARDIK 3E</b> After take-off climb straight ahead to 1300FT or above. At 3.2NM KST, turn LEFT on track 139° to ARDIK (R139.6° D63.5NM KST). Cross ARDIK at FL120 – FL200.
<b>BALOK 3E</b> After take-off climb straight ahead to 1300FT or above. At 3.2NM KST, turn RIGHT on track 155° to BALOK (R154.2° D58.5NM KST). Cross BALOK at FL120 – FL200.
<b>BUDER 3E</b> After take-off climb straight ahead to 1300FT or above. At 3.2NM KST, turn RIGHT on track 205° until intercept R175°KST, then proceed on track 175° to BUDER (R175.3° D58.6NM KST). Cross BUDER at FL120 – FL200.
<b>DOPAN 3E</b> After take-off climb straight ahead to 1300FT or above. At 3.2NM KST, turn RIGHT on track 220° until intercept R190°KST, then proceed on track 190° to DOPAN (R190.0° D63.8NM KST). Cross DOPAN at FL120 – FL200.
<b>BAMIK 3E</b> After take-off climb straight ahead to 1300FT or above. At 3.2NM KST, turn RIGHT on track 264° until intercept R224°KST, then proceed on track 224° to BAMIK (R224.2° D64.5NM KST). Cross BAMIK at FL120 – FL200.
<b>TITUR 3E</b> After take-off climb straight ahead to 1300FT or above. At 3.2NM KST, turn RIGHT on track 307° until intercept R267°KST, then proceed on track 267° to TITUR (R266.9° D87.6NM KST). Cross TITUR at FL120 – FL200.
<b>LANOR 3E</b> After take-off climb straight ahead to 1300FT or above. At 3.2NM KST, turn RIGHT on track 358° until intercept R318°KST, then proceed on track 318° to LANOR (R317.7° D63.0NM KST). Cross LANOR at FL120 – FL200.
<b>UNIBE 2E</b> After take-off climb straight ahead to 1300FT or above. At 3.2NM KST, turn LEFT on track 128° to UNIBE (R129.3° D60.5NM KST). Cross UNIBE at FL120 – FL200.